

WLL 219 MYTH & ADAPTATION

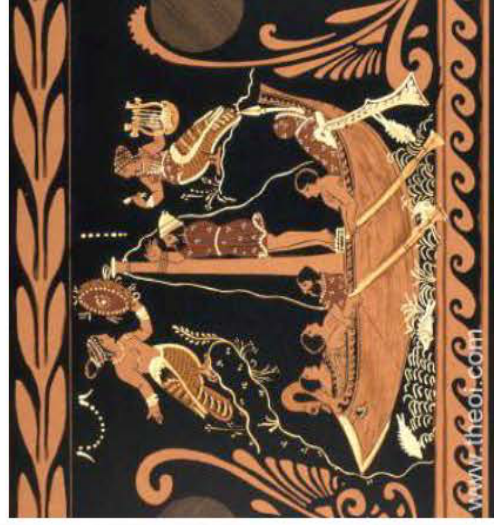
PROFESSOR MARIA RYBAKOVA

An examination of classical myth from antiquity to the 20th Century - We will follow mythic paradigms as they travel from classical to contemporary representations in poetry, drama, and film, in the process interpreting the relevance of myth to literary, historical, social, and cultural issues.

HADES ABDUCTS PERSEPHONE...



PROMETHEUS STEALS FIRE FROM THE GODS



ODYSSEUS IS LURED BY THE SIRENS

